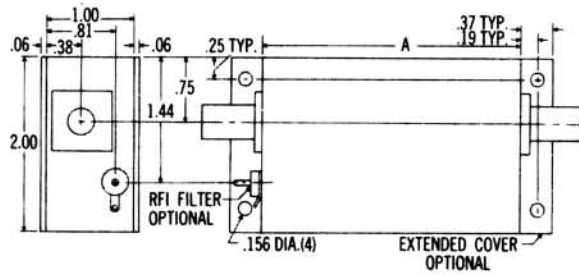
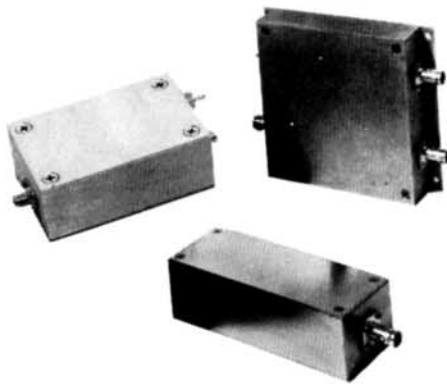


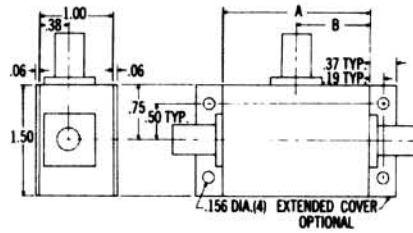
STANDARD SERIES



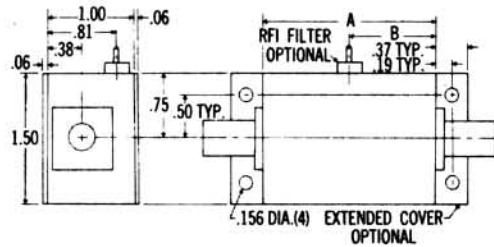
| | A |
|------------|------|
| 6200-51170 | 3.00 |
| 6201-51170 | 3.00 |
| 6202-51170 | 3.00 |
| 6200-51180 | 4.00 |
| 6201-51180 | 4.00 |
| 6202-51180 | 4.00 |
| 6200-51190 | 5.00 |
| 6201-51190 | 5.00 |
| 6202-51190 | 5.00 |
| 6200-51200 | 6.00 |
| 6201-51200 | 6.00 |
| 6202-51200 | 6.00 |

Compac Standard Series offers 31 off-the-shelf case configurations. In addition, you can choose either Blank or RFT construction and flush or extended bottom covers. A choice of four-hole flange-mounted female connectors (SMA, TNC, N, BNC) designed to meet MIL C-39012 are available as well as optional filters. (For connector and filter specs please refer to pages and of this catalog.)

Compac Standard Series lends itself to your engineering stock room. Cases and connectors can be interchanged to fit your requirements.



| | A | B |
|------------|------|------|
| 6300-51100 | 1.50 | .75 |
| 6300-51110 | 2.00 | 1.00 |



| | A | B |
|------------|------|------|
| 6200-51100 | 1.50 | .75 |
| 6201-51100 | 1.50 | .75 |
| 6202-51100 | 1.50 | .75 |
| 6200-51110 | 2.00 | 1.00 |
| 6201-51110 | 2.00 | 1.00 |
| 6202-51110 | 2.00 | 1.00 |

HOW TO ORDER: BASIC PART NUMBER

CASE TYPE

R - RFT
B - Blank

RFI FILTER TYPE

0 - No Filter
1 - Plain Teflon Feed Thru
2 - Filter Feed Thru

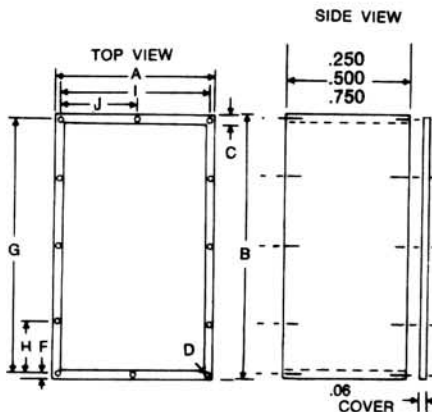
CONNECTOR TYPE

1 - SMA Female
2 - BNC Female
3 - TNC Female
4 - N Female

COVER TYPE

0 - Standard flush
1 - Extended

FLT SERIES



- Compac's FLT Series Enclosures have shielding capabilities to 60 dB at 3 GHz
- Board Mountable Construction allows direct to board mounting 1 cover option provide same tapped pattern on opposite side
- Independent access to component without removing it from the board
- Greater Interior Acreage

Construction Specs: Case — AL 6063T52
Covers—AL 5052-H32
finish chemical film per MIL C 5541 Class 1 A
Conformance to MIL 45208A

HOW TO ORDER:

FL — 4110 — XXX —

CASE HEIGHT

025—.250
050—.500
075—.750

FINISH

I—Irridite
N—Nickel
S—Specify

| | A | B | C | D | E | F | G | H | I |
|--------|------|-------|-----|---|------|-----|-------|-------|-------|
| FL4110 | .75 | .75 | 125 | 4 | 0-80 | 070 | .610 | — | .610 |
| FL4120 | .75 | 1.50 | 125 | 4 | 0-80 | 070 | 1.360 | — | .610 |
| FL4130 | 1.00 | 1.00 | 125 | 4 | 0-80 | 070 | .860 | — | .860 |
| FL4140 | 1.00 | 1.500 | 125 | 4 | 0-80 | 070 | 1.360 | — | .860 |
| FL4150 | 1.00 | 2.00 | 125 | 6 | 0-80 | 070 | 1.860 | .930 | .860 |
| FL4160 | 1.25 | 1.25 | 125 | 4 | 0-80 | 070 | 1.110 | — | 1.110 |
| FL4170 | 1.25 | 2.50 | 125 | 6 | 0-80 | 070 | 2.360 | 1.180 | 1.110 |
| FL4180 | 1.50 | 1.50 | 125 | 6 | 0-80 | 070 | 1.360 | .680 | 1.360 |
| FL4190 | 1.50 | 2.00 | 125 | 6 | 0-80 | 070 | 1.860 | .930 | 1.360 |

* All dimensions are in inches. For case size and spec (L x W) please refer to charts on pages 3 or 4.